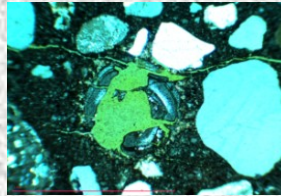




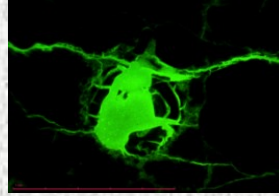
# CRIC-OCCN EXPERT IN OPTICAL MICROSCOPY

## Identification of reaction products

Chalcedony grain bursted by the action of alkali-silica gel



*Polarized parallel-crossed light*

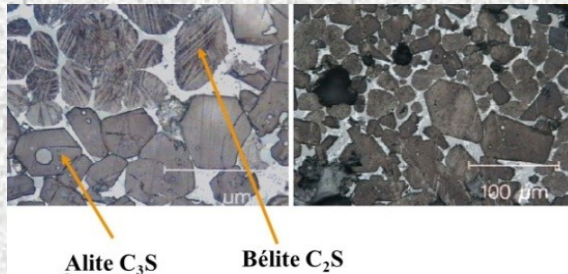


*Polarized reflected fluorescent light*



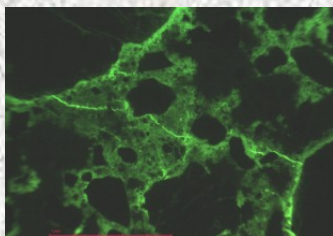
Fracturing generated by the action of thaumasite (sulphate attack at low temperature)

## Characterisation of anhydrous clinkers



*Simple polarized light*

## Identification of cracking, determination of the porosity

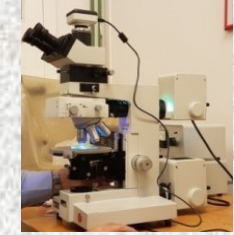


*Polarized reflected fluorescent light*

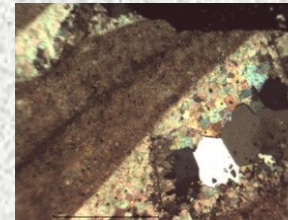


# CRIC-OCCN EXPERT IN OPTICAL MICROSCOPY

Polarizing optical microscope equipped with a camera of 10 MPx

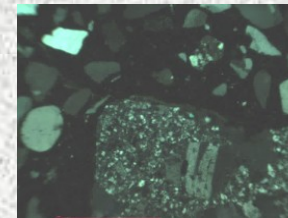


## Identification of aggregates' nature



*Polarized parallel-crossed light*

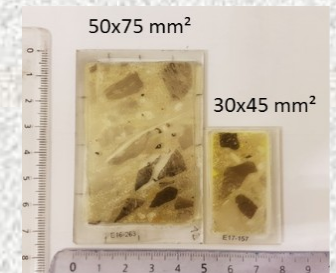
Siliceous limestone  
*Potentially reactive to the alkali-silica reaction*



Quartzitic microdiorite with a phenocrystal of feldspar  
(« Porphyre »)

## Observation of thin sections

2 dimensions of thin sections, with or without impregnation of fluorescent resin





[www.cric-occn.be](http://www.cric-occn.be)



Cement, Admixtures, Aggregates, Concrete ,  
Hydraulic Binders,...

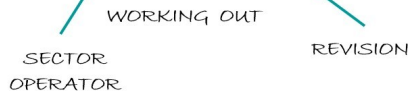
### Tests



### Research



### Standards



**Service Essais  
BELAC – 023 Test**



One address :  
Avenue Adolphe Buyl 87, 1050 Brussels



One address:

Avenue Adolphe Buyl 87 (building C)  
1050 BRUSSELS

Tel: +32 (0)2/626.89.20  
Fax: +32 (0)2/648.51.20

Your contact:

**Dr Géraldine Vanhamme**  
[g.vanhamme@cric-occn.be](mailto:g.vanhamme@cric-occn.be)

[www.cric-occn.be](http://www.cric-occn.be)

### FEBELCEM

Fédération Belge du Ciment  
Federatie van de Belgische  
Cementnijverheid



### FEDBETON

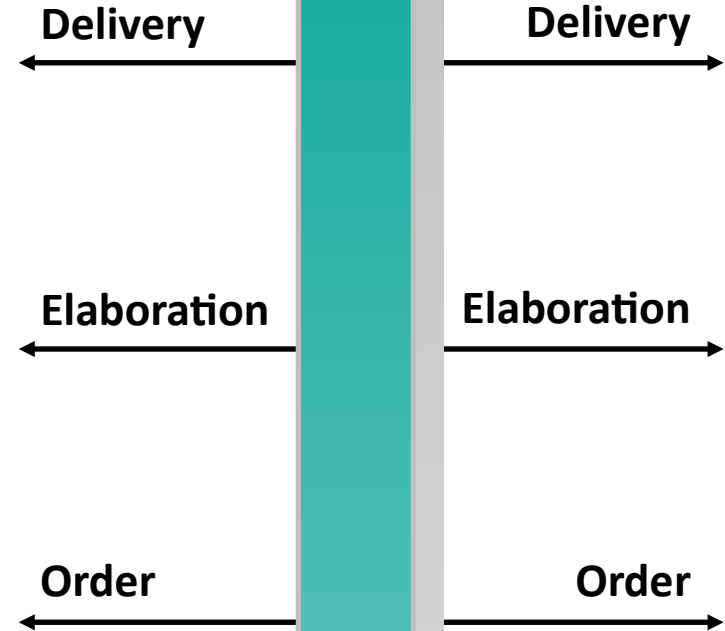
Federatie voor  
Stortklaar Beton  
Fédération du béton  
prêt à l'emploi



### GBB - BBG

Groupement belge du béton  
Belgische Betongroepering

*Expert in  
Optical microscopy*



**The CRIC-OCCN  
builds your future**